

**Nikon****Lite•Touch Zoom 150ED / QD Specifications****Type of camera:** 35mm autofocus lens-shutter camera with Nikon zoom lens**Usable film:** DX-coded 35mm format film in film cartridge**Picture format:** Normal: 24 x 36mm; Panorama (150ED QD only): 13.3 x 36mm**Lens:** 38-150mm f/5.4-12, 7 elements in 5 groups (ED lens and Aspheric lenses are used)**Shutter:** Programmed electronic type; Also serves as diaphragm blades**Shutter speed:** 2 to 1/500 sec.**Viewfinder:** Real-image viewfinder; Frame coverage: over 80% in regular-size frame; approx. 0.38x magnification at 38mm, approx. 1.2x at 150mm; Dioptre adjustment; (-3-+1m<sup>-1</sup>), Anti-fog viewfinder**Viewfinder information:** Image size frame with parallax compensation marks; Panorama-format frame marks (150ED QD only); Autofocus frame marks: **Green LED** (in-focus indicator) — Lights up: subject focused, Blinks slowly (at 2Hz): subject is too close to achieve correct focus, Blinks quickly (at 8Hz): subject is difficult to focus; **Orange LED** (flash-ready light) — Lights up: flash ready, Blinks slowly (at 4Hz): flash being charged, Blinks quickly (at 8Hz): the popped-up flash unit is being pressed down**Focusing:** Wide-Area Passive Autofocus system; Activated by lightly pressing shutter release button; Distance range (approx.): 0.76m to infinity at 38mm, 0.79m to infinity at 150mm**Focus lock:** Focus is locked as long as the shutter release button is lightly pressed**Exposure control:** Electronically controlled program AE; auto exposure range (ISO 100): EV 6-16 at 38mm or EV 6.5-16 at 150mm; (ISO 400): EV 8-17 at 38mm, EV 8-18 at 150mm**Film speed setting:** ISO 25, 50, 100, 200, 400, 800, 1600 and 3200 DX-coded film automatically set; With non-DX-coded film, automatically set to ISO 25**Film loading:** Film automatically advances to the first frame upon completion of film loading; With a film cartridge confirmation window**Frame counter:** Shown in the LCD panel; Additive type; Counts back during film rewind**Self-timer:** Electronically controlled; Activated by depressing the shutter release button;

Self-timer lamp blinks and lights up to show when ready; Timer duration 10 sec.; Cancellable

**Film advance:** Film automatically advances by one frame after each shot; Auto rewind at the end of film roll; Mid-roll rewind function available**Remote control (optional) (Lite•Touch Zoom 150ED QD only):** Infrared wireless remote control; 2 sec. delay shutter release; Effective range is within approx. 5m straight in front of the camera; One 3V CR2025 lithium battery; Battery will last for approx. 5 years;

Dimensions (W x H x D): approx.: 60.9 x 27.9 x 7.6mm; Weight (including battery): approx. 9.9g

**Built-in flash:** Four flash modes available: Auto Flash, Flash Cancel, Anytime Flash, and Night Portrait (Slow Sync Flash); Flash automatically fires when there is not enough light or subject is backlit; Flash shooting range (ISO 100): approx. 0.75-3.8m at 38mm, approx. 0.8-1.6m at 150mm; (ISO 400): approx. 0.75-7.6m at 38mm, approx. 0.8-3.2m at 150mm;

Shutter release button is locked during flash charging; Recycling time approx. 5 sec.

**Red-Eye Reduction mode:** Red-Eye Reduction lamp lights up for approx. 1 sec. before flash fires**Battery life:** Approx. 10 rolls of 24-exposure film when flash is used for half the exposures**LCD panel (Power is on):** Frame counter, Flash mode, Red-Eye Reduction, Self-timer/Remote Control (150ED QD only), Infinity Focus mode, Low battery power, Time/Date (150ED QD only)**Power source:** One 3V CR123A (or DL123A) lithium battery**Date imprint function (Lite•Touch Zoom 150ED QD only):** Functions with panorama-format pictures; Auto film speed setting with DX codes (ISO 25-3200); Printed dates include Year, Month, Day, Hour, (24-hour cycle with no AM/PM) and Minute with five choices: Year/Month/Day, Month/Day/Year, Day/Month/Year, Day/Hour/Minute, and no-imprint; Leap year adjustment until 2040; Power source is the same as the camera body; Built-in clock with timing accuracy within  $\pm 90$  seconds a month**Dimensions (W x H x D) (approx.):** 117 x 60 x 46mm**Weight (without battery) (approx.):** 195g

Specifications apply when a fresh battery is used at normal temperature (20°C).

Specifications and designs are subject to change without any notice or obligation on the part of the manufacturer. August 2002

© 2002 Nikon Corporation

**WARNING**

TO ENSURE CORRECT USAGE, READ MANUALS CAREFULLY BEFORE USING YOUR EQUIPMENT.

**Nikon**<sup>®</sup>  
We take the world's  
greatest pictures.<sup>®</sup>**Nikon****NIKON CORPORATION**

FUJI BLDG., 2-3, MARUNOUCHI 3-CHOME, CHIYODA-KU, TOKYO 100-8331, JAPAN

www.nikon-image.com/eng/

# Lite•Touch Zoom 150ED

**38-150mm Zoom 35mm Format Compact Camera with ED Glass***Unsurpassed style.  
Dazzling performance.*



## EXPERIENCE THE QUALITY. FEEL THE EXCITEMENT.

Consider how much more exciting life could be with a super-easy-to-use, ultracompact 4x zoom camera that delivers photos of unprecedented quality. A camera where design and style meet quality and performance.

Behind the slim, elegant exterior of the Lite•Touch Zoom 150ED lies a lens of remarkable power and versatility. The wide range of 38-150mm gives superior picture-framing flexibility and Nikon's state-of-the-art ED glass and optical design ensure clear, natural images. Other advanced functions enable you to capture those precious moments in fresh, innovative ways. But above all, the Lite•Touch Zoom 150ED is designed for ease of use, enabling you to handle all types of subjects and situations swiftly and effortlessly, providing you with a new found freedom to create.

The Nikon Lite•Touch Zoom 150ED. A joy to own. A joy to use. And an adventure you have to experience for yourself.



## POWERFUL 4x ZOOM LENS

Lite•Touch Zoom 150ED

**Every precious moment, forever yours.**

With its powerful, high-resolution 4x zoom lens, the Lite•Touch Zoom 150ED is no ordinary compact camera.

Simplified operation lets you compose your shots with greater freedom from 38mm (wide) to 150mm (telephoto).

Squeeze the entire room into your photo, or sneak in close and capture the sparkle in those eyes.



Wide 38mm



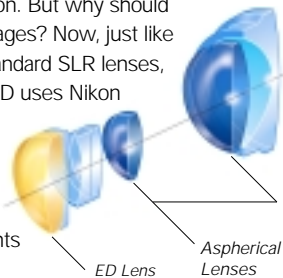
100mm



Telephoto 150mm

### Nikon Single Lens Reflex (SLR) lenses' optical quality made compact

Lens quality is just one of the reasons why professional photographers choose Nikon. But why should pro's grab all of the advantages? Now, just like our interchangeable pro-standard SLR lenses, the Lite•Touch Zoom 150ED uses Nikon ED (Extra-low Dispersion) glass to minimise chromatic aberration (for clearer colour and contrast), and two aspherical lens elements to minimise distortion.





## JUST POINT AND SHOOT

Lite•Touch Zoom 150ED

### Faster, finer, easier

Nikon's state-of-the-art autofocus gives you impeccable images even in difficult shooting situations.

And programmed auto exposure delivers the

optimal exposure, instantly and automatically, even in complex lighting conditions.

With the Lite•Touch Zoom 150ED, you are the master of all you survey.



### Wide-Area Passive Autofocus

Whether your subject is in the centre of your shot or off to the side, the wide focus area makes it easy to obtain a precise focus, for ultra-sharp, dazzlingly clear images.



### Close-ups

Capture even the smallest subjects in clear detail.

The Lite•Touch Zoom 150ED enables you to get as close as 80cm to your subject even when zoomed right in.



### ▲ Infinity Focus

Take landscape shots of magnificent depth, receding to the horizon, by fixing the focus on infinity.

An easy way to obtain sharp, clear pictures of distant scenes.



## INTELLIGENT FLASH

Lite•Touch Zoom 150ED

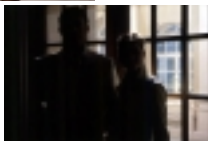
### Light up my life!

Four flash modes provide the versatility you need to capture every precious memory in a positive light.

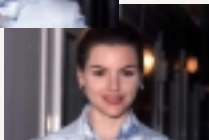
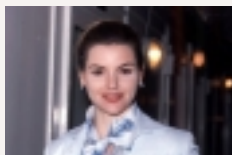


#### Auto Flash

You'll never have to worry about whether you need the flash or not. The Lite•Touch Zoom 150ED determines when to use it and fires automatically. And an intelligent SPD (silicon-photodiode) sensor determines when a scene is backlit, firing the Auto Flash to achieve just the right balance of foreground and background illumination. Now, you can take great photos even in low light or when your subject is lit from behind.



Without



#### Red-Eye Reduction

The Red-Eye Reduction lamp lights up to illuminate the scene, reducing the size of your subjects' pupils and minimising the effects of red-eye.

Normal Flash



#### Flash Cancel

Select this mode when you want to shoot a scene using only ambient light. Flash Cancel also comes in handy in situations where flash use is prohibited, such as in a museum.



Normal Flash

#### Anytime Flash

A convenient way to brighten your foreground and fill in shadows when shooting backlit subjects or when ambient light is particularly strong. Use it in daylight to add brightness and depth to your photos.



#### Night Portrait (Slow Sync Flash)

In dim situations, Night Portrait (Slow Sync Flash) allows you to light up a foreground subject while using a slow shutter speed to capture background details as well.

A valuable effect for both night and indoor scenes.



Normal Flash

## OTHER FEATURES

### Lite•Touch Zoom 150ED



#### Real-image Zoom Viewfinder

The Lite•Touch Zoom 150ED's viewfinder provides a bright, clear field of view, for easier picture-taking.



#### Dioptre Adjustment

This feature, especially helpful to those who are near- or far-sighted, enables you to adjust the eyepiece dioptre from -3 to +1m<sup>-1</sup>.



#### Anti-Fog Eyepiece

The viewfinder eyepiece has been specially coated to prevent it from fogging in cold weather, or in hot and humid conditions.



#### Automatic Film Operation

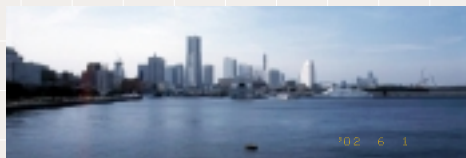
The Lite•Touch Zoom 150ED provides quiet, inconspicuous film loading, frame advance and rewind.

You can even rewind the film at mid-roll.

### Panorama Mode and Data Imprinting (150ED QD only)



Viewfinder



QD imprinting helps you recall when photos — even panorama frames — were shot.

**Panorama Mode** adds greater breadth to everything from landscape vistas to group portraits, at any focal range. And you can switch freely between a panorama and a normal frame, even in the middle of a roll.

**Data Imprinting** allows you to choose from five date and/or time combinations, to remember exactly when you shot a particular photo.

### Optional Remote Controller (150ED QD only)

With the optional ML-L3 wireless remote controller, you can operate the shutter release up to 5m from the front of the camera.



Optional Remote Controller ML-L3



Lite•Touch Zoom 150ED QD LCD panel

## Lite•Touch Zoom 150ED/150ED QD

(\* 150ED QD only)

\* Date (time) select mode/

\* Date (time) setting mode button

Red-Eye Reduction/Self-timer/

\* Remote control sensor window

